

TOP PLATES - STANDARD AND OPTIONAL

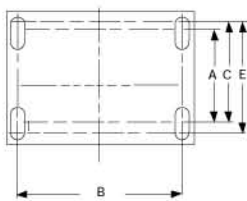
Over the years, Darcor has manufactured many different sizes of top plates to eliminate problems when changing casters. These top plates are shown as options. Darcor can manufacture other top plates as required, provided the bolt hole centers do not interfere with the swivel raceway. Their cost is based on size and quantity.

TOP PLATE NUMBER	OVERALL SIZE		BOLT HOLE CENTERS (SEE DIAGRAMS)				MOUNTING BOLT SIZE	STANDARD ON SERIES	* OPTIONAL ON SERIES	
	WIDTH	LENGTH	WIDTH	LENGTH	WIDTH	LENGTH				LENGTH
	W x L		A - B		C - D		E			
3 (Swivel only)	1-3/8 x 1-7/8		13/16 x 1-3/8				3/16		E2	
3	4 x 4		3 x 3				3/8 - 9/16		30-60-70-400	
4 (Swivel only)	1-1/4 x 2-3/8		13/16 x 1-7/8				3/16		53-20	
4	4 x 7		3 x 6				3/8		400	
5 (Swivel only)	1-7/8 x 2-5/8		1-1/4 x 2				1/4		53-20	
6 (Slotted)	5 x 7		3-3/8 x 5-1/4		4-1/8 x 6-1/8		1/2	700-900	400-800	
7 (Swivel only)	2 x 2-1/8		1-1/2 x 1-1/2				1/4		53-20	
8 (Slotted)	4-1/2 x 6-1/4		2-7/16 x 4-15/16		3-3/8 x 5-1/4		1/2	800	400	
9	3-3/8 x 4-3/8		2-3/8 x 3-3/8				3/8 - 9/16		30-60-70-400	
11 Swivel only	1-3/4 x 3		1 x 2-1/4				1/4		53-20	
12 (Swivel-elongated holes)	2-1/2 x 3-5/8		1-3/4 x 2-3/4		x 2-7/8		3	5/16	20	53
12 (Rigid-elongated holes)	2-3/4 x 4		1-3/4 x 2-3/4		x 2-7/8		3	5/16	20	
14	4 x 5		3 x 4				3/8		70-400	
16 (Swivel-elongated holes)	2-1/2 x 3-5/8		1-3/4 x 2-3/4		x 2-7/8		3	5/16	30-60	70 Swivel & Rigid
16 (Rigid-elongated holes)	2-7/8 x 4-1/8		1-3/4 x 2-3/4		x 2-7/8		3	5/16	30-60	
19 (Swivel only)	3-3/8 x 4-3/8		2-3/8 x 3-3/8				3/8		70 Swivel	
22	3-7/8 x 6-1/4		2-7/16 x 4-7/8				3/8		400	
31 (Slotted)	4 x 4-1/2		2-5/8 x 3		3 x 3-5/8		3/8	70-400	30-60	
5-5000	6 x 10		4-3/4 x 8-3/4				1/2	5000		
5-5200	6 x 12		4-1/2 x 10-1/2				1/2	5200		
IS 2 (Slotted)	85mm x 100mm		45mm x 75mm		60mm x 80mm		9mm	30-60-70		
IS 3 (Elongated)	110mm x 140mm		73mm x 105mm		80mm x		87mm	11mm	400	30-60-70

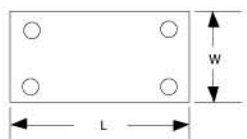
* All top plates available as options on other series are subject to special pricing.

DIMENSIONS

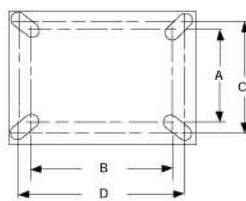
IS ELONGATED



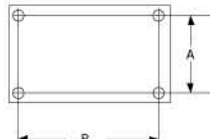
OVERALL



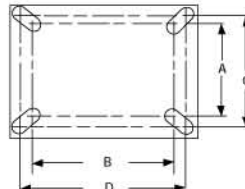
IS SLOTTED



BOLT HOLE CENTERS



SLOTTED



ELONGATED

